

MELBOURNE  
CHAMBER  
OF COMMERCE



# 2021 MEMBERSHIP



The Melbourne Chamber is the premium membership of the state's largest and most influential business organisation, the Victorian Chamber of Commerce and Industry.



The essence of the Melbourne Chamber membership is **connection**. Connection for your business, connection for you and your leaders, connection to outstanding events and activities, and connection to Victoria.



## Who are our members?

Our membership consists of the most remarkable Victorian businesses across sectors. Together, we get through the tough times, celebrate our triumphs and help each other move forward. It's all part of belonging to an exclusive group of innovative and driven businesses.



## What our members say about us

*"The MCC offer is bespoke and we're very impressed with their advocacy at Victorian and Australian levels. They have been a fundamental voice for business this year with bushfires and the pandemic."*

**JEREMY BLACKSHAW**

MANAGING PARTNER INTERNATIONAL,  
MINTER ELLISON

Connection to  
outstanding events  
and activities



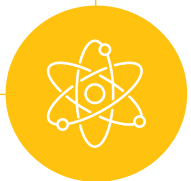
Connection for  
your business



Tailored  
business and  
development  
outcomes and  
Victorian  
prosperity



Connection to  
Victoria



Connection for you






Connection for  
your leaders

| Connection<br>for your business   | Connection<br>for you and<br>your leaders  | Connection<br>to outstanding<br>events and activities  | Connection<br>to Victoria  |
|---|--|--|--|
| <ul style="list-style-type: none"> <li>&gt; To political and policy decision-makers</li> <li>&gt; Local and global companies</li> <li>&gt; Insights (to receive)</li> </ul> | <ul style="list-style-type: none"> <li>&gt; To other leaders</li> <li>&gt; Peer to peer counsel</li> <li>&gt; C-Suite development</li> <li>&gt; Profiling opportunities</li> </ul> | <ul style="list-style-type: none"> <li>&gt; Build personal relationships and create networks in unique settings</li> <li>&gt; Social opportunity for partners</li> </ul> | <ul style="list-style-type: none"> <li>&gt; Make your mark in shaping our great state</li> <li>&gt; Insights (to share)</li> </ul> |
| Intimate Political Leadership forums 3 p.a. (virtual and actual)  | Intimate Business Leadership forums 3 p.a. (virtual and actual)  | President's Dinner 1 p.a.  | Input into VCCI policy submissions   |
| Facilitated introductions to policy influencers and makers and other members  | Events and digital content including Member evening, Exec Council presentations  | AFL Grand Final Lunches 2 p.a.   | Post Budget Lunch 1 p.a.   |
| Policy and Working with Government support  | Best Practice Tours 3 p.a.   | Annual Member Cocktail Event   | Access to VCCI's Internship program  |
| Intimate Industry Roundtables and Working Groups  | Tailored 'Leader 2 Leader' introductions   | <i>Victorian Chamber Presents</i> (VCP) and Business Leaders Event Series  | Profiling opportunities of members' business through digital channels  |
| Tailored 'Business 2 Business' introductions  | HR Network activities  | Annual Executive Assistants' End of Year Celebration   | Foster industry collaboration by developing and promoting industry-specific tools  |
| Regular communications plus a Quarterly Update edition to the broad organisation  | Professional development opportunities   | Business After Dark series – 2 tickets 4 p.a.  | Complement VCCI training courses with relevant content   |
| Industry trends, sentiment and other insights (gathered and interpreted by VCCI)  |  | Preferential access to VCCI's business services (credit available)   |  |



## Contact

The Melbourne Chamber of Commerce  
150 Collins Street,  
Melbourne, VIC 3000

 [www.melbournechamber.org.au](http://www.melbournechamber.org.au)  
 [members@melbournechamber.org.au](mailto:members@melbournechamber.org.au)  
 03 8662 5333

